

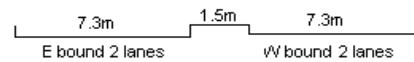
YEAR 2022

COVERAGE (B) STATION 6221

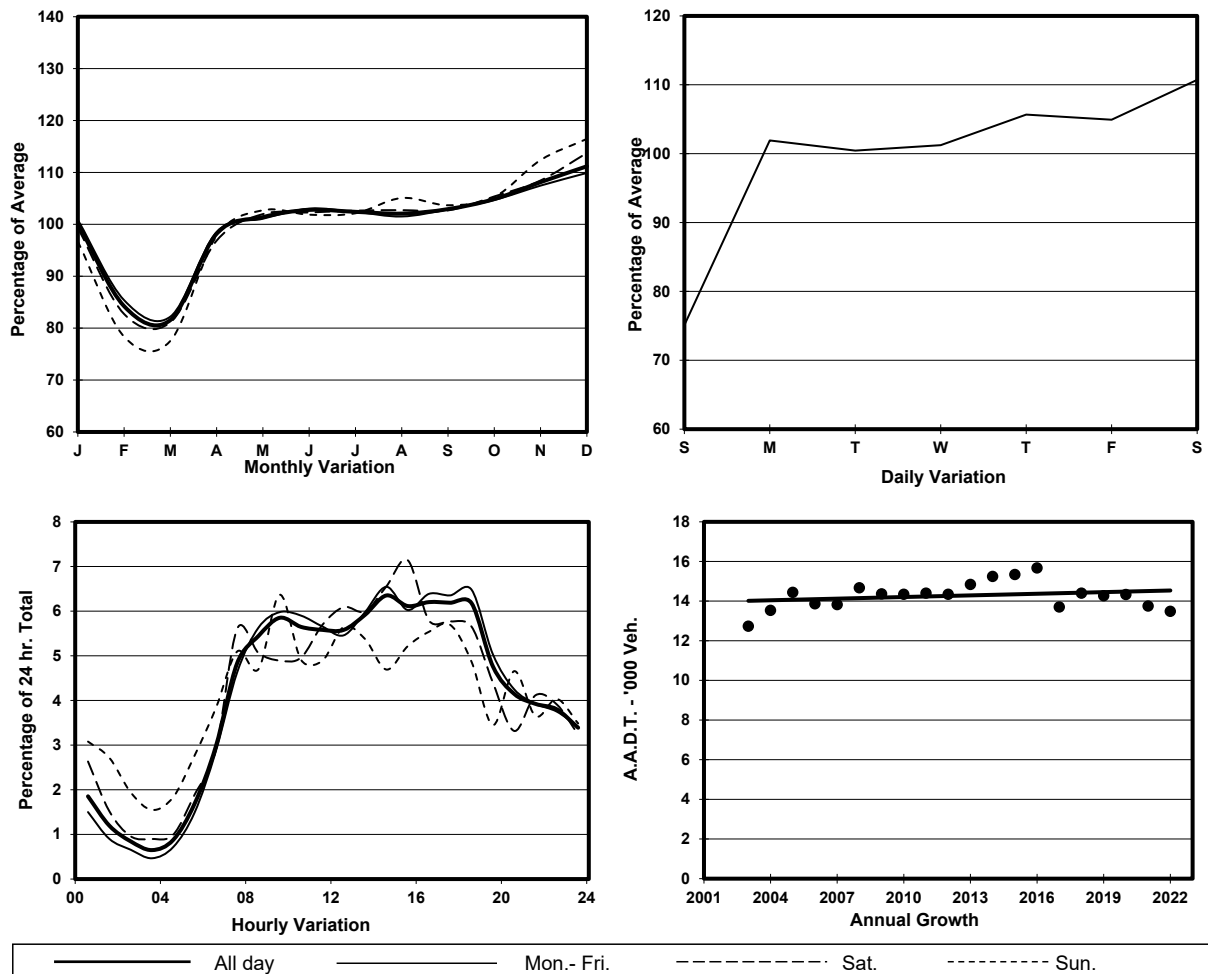
ROAD NETWORK MAJOR

ROAD TYPE DISTRICT DISTRIBUTOR

LINK TSING YI N COASTAL RD FO (from TSING TSUEN RD to TAM KON SHAN INT W END)



1. TRAFFIC FLOW VARIATION AND GROWTH



2. TRAFFIC CHARACTERISTICS (BY DIRECTION)

Parameter	All - Day	Mon. - Fri.	Sat.	Sun.
EAST BOUND				
A.A.D.T.	5470	5700	6020	4320
R 12 / 24 - %	69.9	71.2	68.3	64.1
R 16 / 24 - %	86.4	87.7	84.4	80.6
AM Peak Hour	0900-1000	0900-1000	0800-0900	0900-1000
One-way flow at AM peak hour	280	310	260	200
T - % (AM)	-	26.6	-	-
PM Peak Hour	1700-1800	1700-1800	1700-1800	1700-1800
One-way flow at PM peak hour	410	430	440	310
T - % (PM)	-	34.9	-	-
Prop.of commercial vehicles - 16 hr.	-	35.3	-	-
WEST BOUND				
A.A.D.T.	8010	8460	9120	5540
R 12 / 24 - %	69.9	70.9	69.8	62.2
R 16 / 24 - %	86.6	88.2	85.3	77.4
AM Peak Hour	0900-1000	0900-1000	0700-0800	0900-1000
One-way flow at AM peak hour	510	540	590	430
T - % (AM)	-	25	-	-
PM Peak Hour	1600-1700	1600-1700	1600-1700	1600-1700
One-way flow at PM peak hour	470	520	490	260
T - % (PM)	-	32	-	-
Prop.of commercial vehicles - 16 hr.	-	29.3	-	-

3. OTHER INFORMATION AND COMMENT

4. Vehicle classification and occupancy - Monday to Friday

Time		Class of vehicle									
		Motor Cycle	Private Car	Taxi	Private LB	PLB	Goods veh.		Non Fr. Bus	Fr. Bus	
							Light	M & H		SD	DD
0700-0800	Pro	6.4	34.8	17.4	0.5	0.0	14.2	16.5	6.9	0.0	3.4
	Ocp	1.0	1.3	2.1	16.0	0.0	1.4	1.1	30.3	0.0	42.6
0800-0900	Pro	2.2	37.9	15.1	0.7	0.0	15.8	19.9	5.5	0.0	2.9
	Ocp	1.0	1.3	2.1	2.5	0.0	1.7	1.1	13.1	0.0	35.2
0900-1000	Pro	2.8	24.8	17.3	0.0	0.0	29.4	20.6	1.9	0.0	3.3
	Ocp	1.0	1.4	2.2	0.0	0.0	1.5	1.2	10.5	0.0	20.4
1000-1100	Pro	3.7	23.5	11.5	1.4	0.0	26.7	27.2	3.2	0.0	2.8
	Ocp	1.0	1.6	2.0	2.3	0.0	1.6	1.3	3.7	0.0	16.3
1100-1200	Pro	2.5	24.7	11.7	0.0	0.0	23.5	31.5	2.5	0.0	3.7
	Ocp	1.0	1.7	2.4	0.0	0.0	1.4	1.3	22.3	0.0	15.3
1200-1300	Pro	1.6	30.4	9.1	0.0	0.0	22.4	27.2	6.4	0.0	3.1
	Ocp	1.3	1.5	1.7	0.0	0.0	1.5	1.2	16.3	0.0	18.2
1300-1400	Pro	1.5	30.1	9.2	1.0	0.0	19.4	28.6	7.1	0.0	3.1
	Ocp	1.0	1.6	2.3	8.5	0.0	1.3	1.1	26.6	0.0	21.9
1400-1500 Peak hour	Pro	4.1	26.7	12.0	1.4	0.0	23.4	24.4	5.1	0.0	3.0
	Ocp	1.0	1.6	2.1	2.3	0.0	1.4	1.1	7.5	0.0	18.7
1500-1600	Pro	0.0	22.2	20.4	0.6	0.0	20.4	28.2	4.8	0.0	3.3
	Ocp	0.0	1.4	1.8	2.0	0.0	1.6	1.1	16.9	0.0	22.5
1600-1700	Pro	2.0	24.6	13.3	2.5	0.0	20.1	28.5	6.4	0.0	2.7
	Ocp	1.0	1.5	1.9	2.0	0.0	1.4	1.2	15.5	0.0	27.6
1700-1800	Pro	4.8	38.3	11.2	1.0	0.0	12.1	21.3	8.2	0.0	3.0
	Ocp	1.1	1.6	1.7	3.0	0.0	1.6	1.1	14.2	0.0	40.9
1800-1900	Pro	7.7	35.0	17.5	1.0	0.0	12.9	14.9	7.2	0.0	3.9
	Ocp	1.1	1.5	2.0	4.0	0.0	1.2	1.1	17.0	0.0	44.3
1900-2000	Pro	1.1	43.4	17.4	0.0	0.0	10.9	20.1	3.3	0.0	3.9
	Ocp	1.5	1.4	2.2	0.0	0.0	1.3	1.0	31.7	0.0	26.0
2000-2100	Pro	2.9	41.5	13.8	0.7	0.0	10.2	17.5	8.7	0.0	4.7
	Ocp	1.0	1.4	1.9	9.0	0.0	1.2	1.1	10.8	0.0	20.1
2100-2200	Pro	1.9	38.6	18.7	0.0	0.0	6.4	23.2	7.7	0.0	3.5
	Ocp	1.0	1.6	1.9	0.0	0.0	1.2	1.1	4.6	0.0	23.2
2200-2300	Pro	4.0	31.0	22.3	0.8	0.0	10.3	22.3	5.6	0.0	3.8
	Ocp	1.0	1.5	1.9	1.0	0.0	1.4	1.0	10.0	0.0	16.3
16 hours	Pro	3.1	31.6	14.6	0.8	0.0	17.9	23.1	5.6	0.0	3.3
	Ocp	1.1	1.5	2.0	3.8	0.0	1.5	1.1	15.9	0.0	26.4

Legend: Pro. Proportion of vehicles in % (Sum may not add up to 100% due to figure rounding)*

Ocp. Average occupancy of vehicles including both driver and passengers*

M&H Medium and Heavy

* All traffic data are collected from combined bounds